

Unit 3 - Batch Processing

Mariana Soppa & Astrid Bracher

Phytoplankton from space: intro to ocean color – 29 & 30 June 2019
Ocean Optics & Ocean Color Remote Sensing

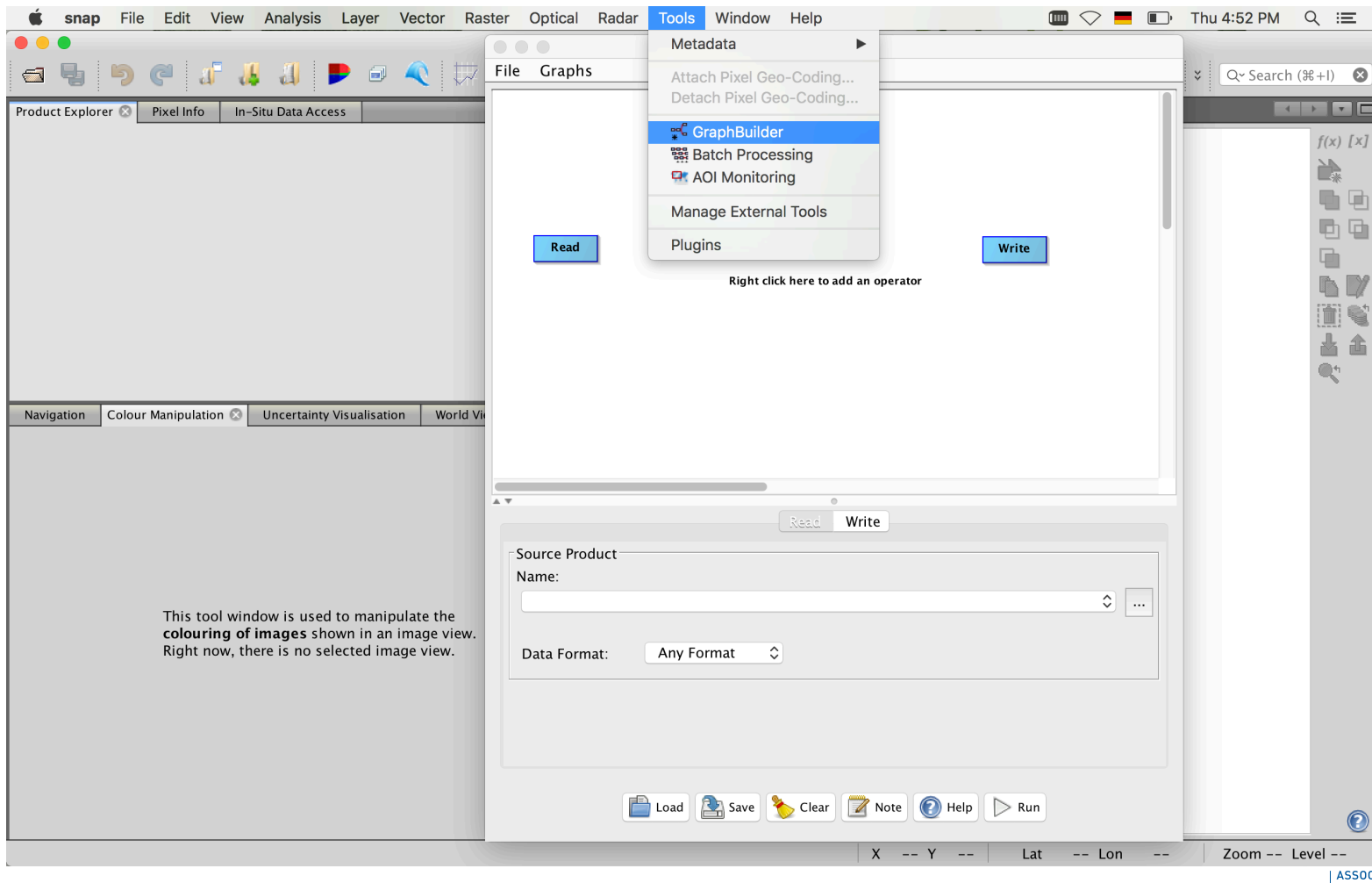
This project received funding from the European Union's Horizon 2020 research and innovation programme under grant agreement n° 810139.

Contents

- Practical (short) course on ocean colour (OC) remote sensing using **Sentinel Application Platform (SNAP)**.
- Lectures:
 - **Unit 1 :**
 - Ocean colour data (sensors, data archives and processing levels)
 - Exploring OC data using SNAP
 - **Unit 2:**
 - Validation Tools
 - **Unit 3:**
 - Batch Processing

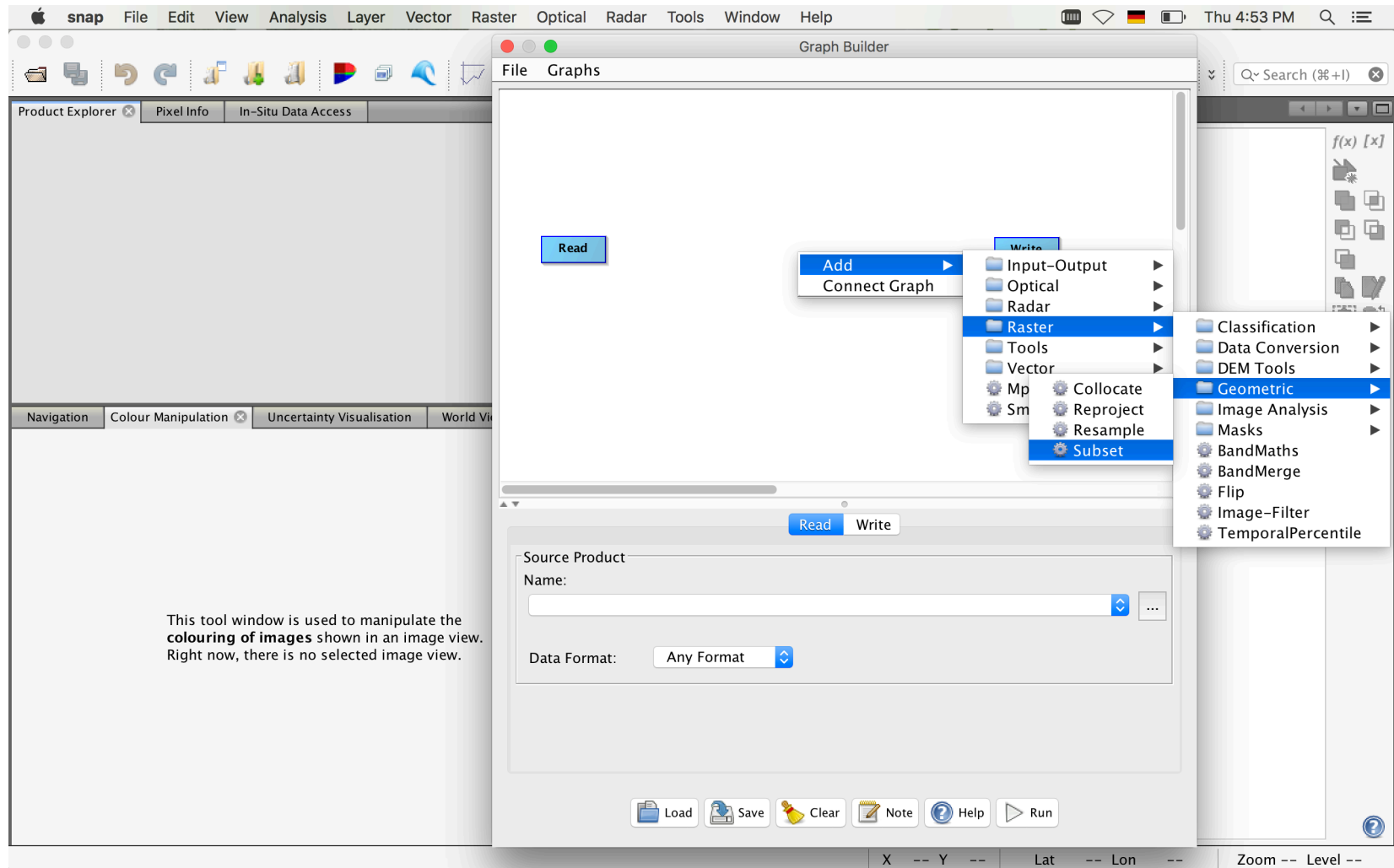
SNAP: Batch Subset (Graph builder + Batch processing)

1. Build your graph: Tools → Graph Builder



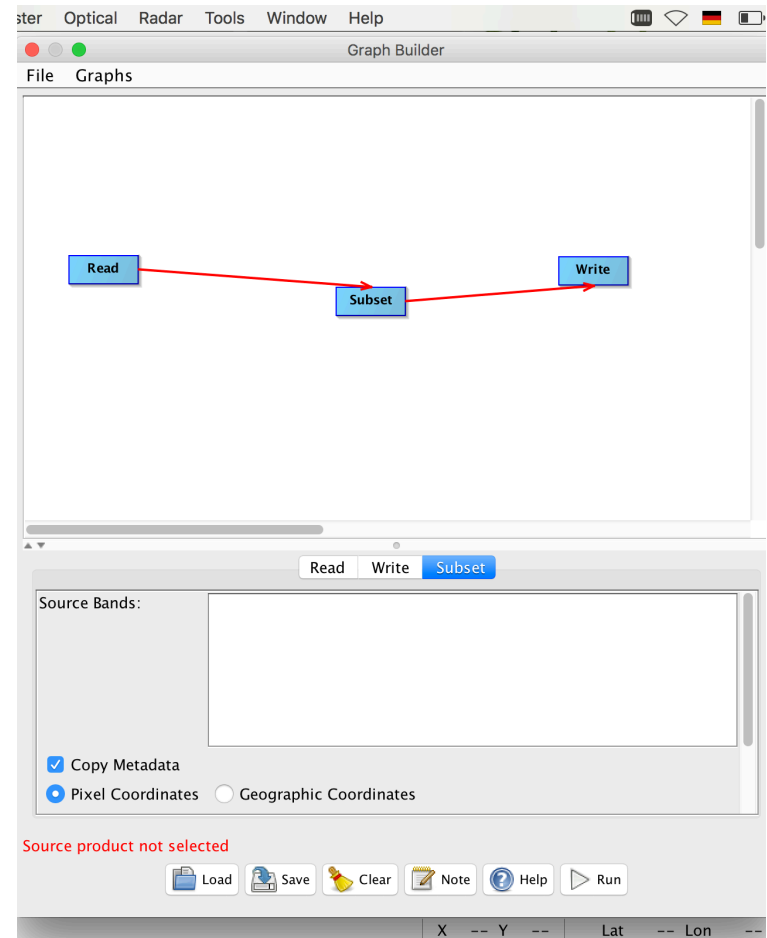
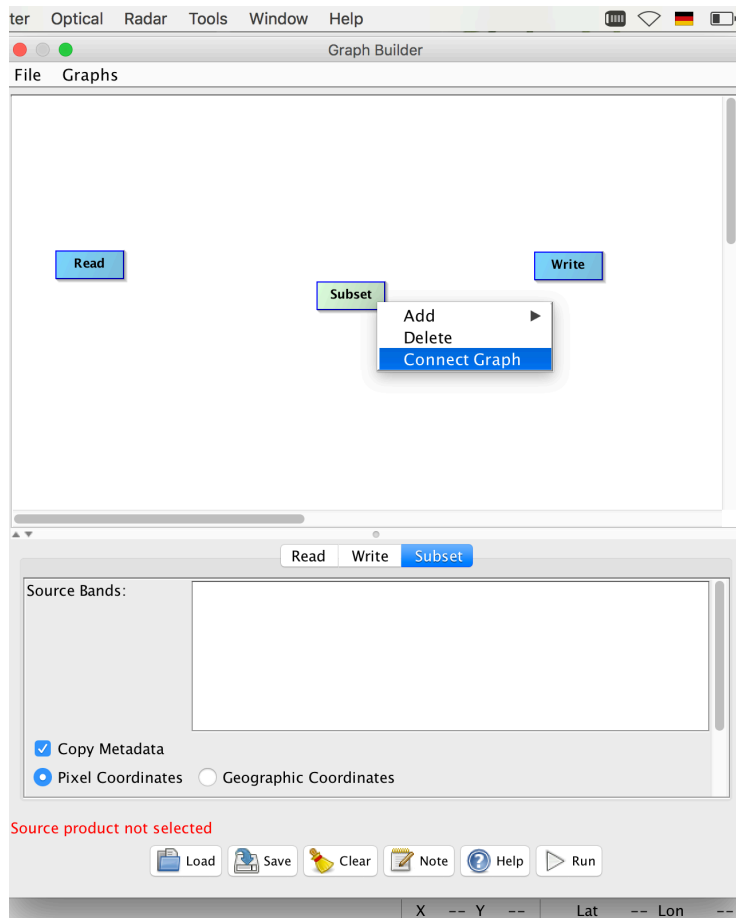
SNAP: Batch Subset (Graph builder + Batch processing)

- right click to add new operators



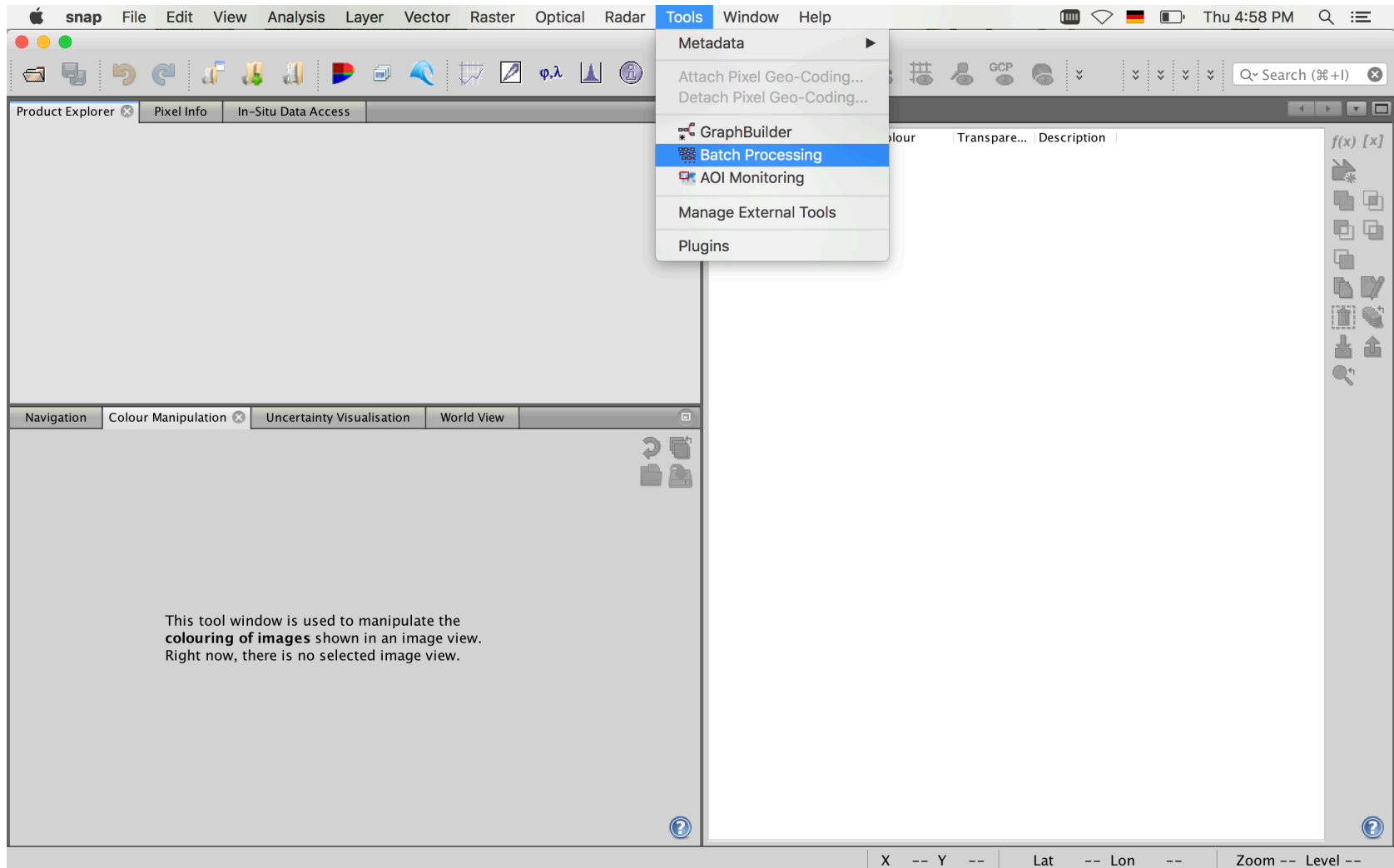
SNAP: Batch Subset (Graph builder + Batch processing)

- right click “connect graph” and save it



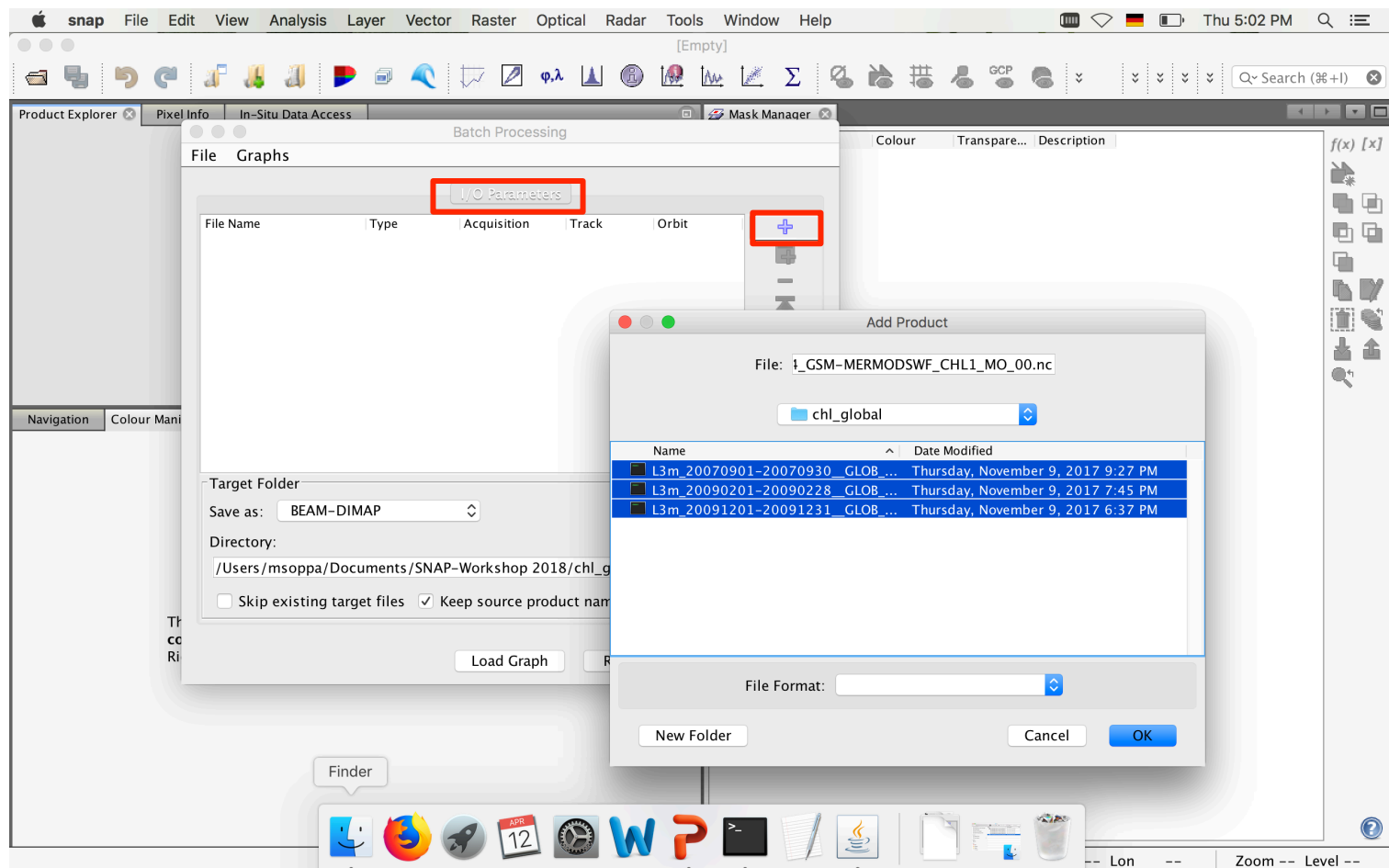
SNAP: Batch Subset (Graph builder + Batch processing)

- Go to batch processing: Tools → batch processing



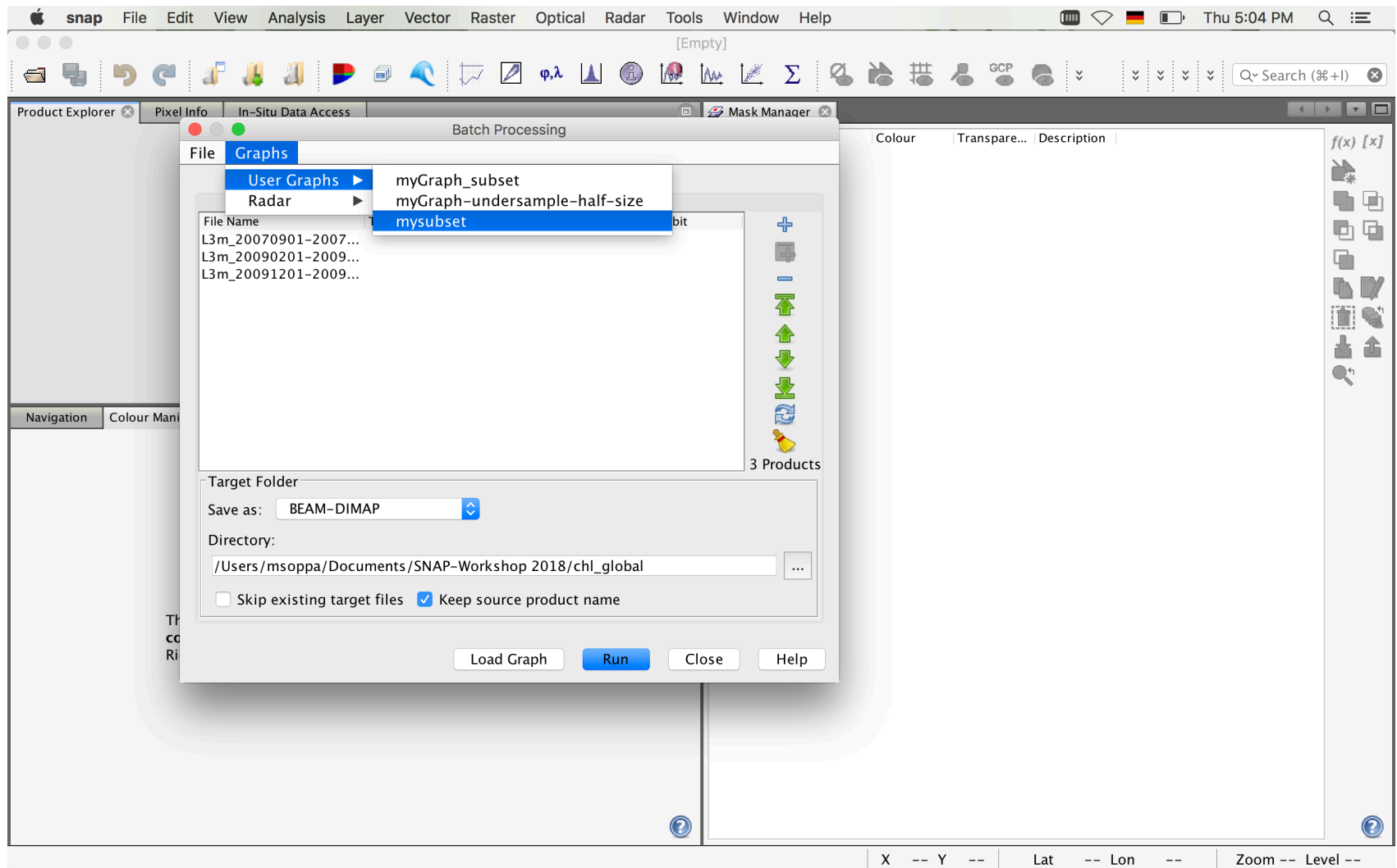
SNAP: Batch Subset (Graph builder + Batch processing)

- I/O parameters: select all images you want to process and give the output path (directory) and the output format (Save as e.g. NetCDF).



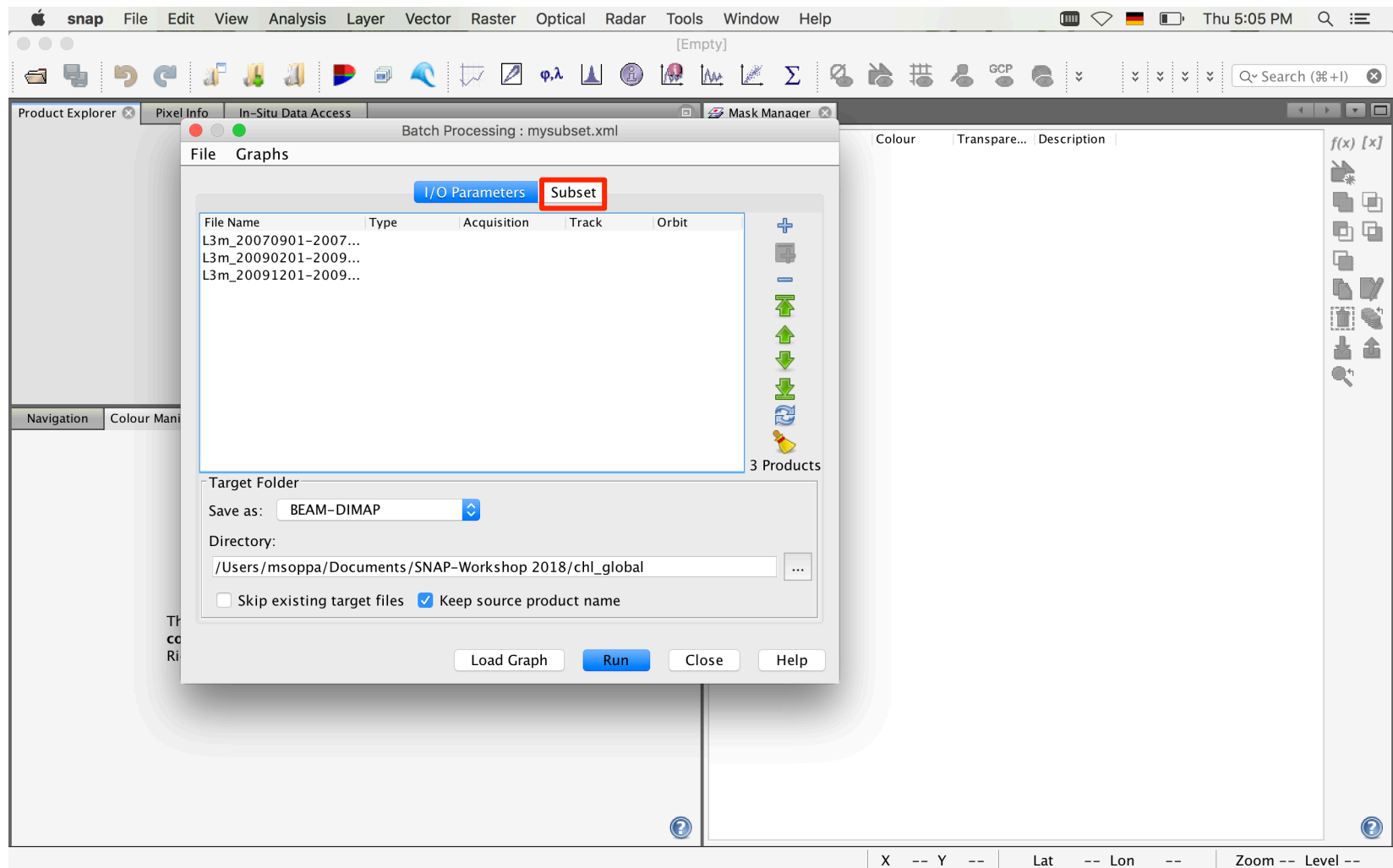
SNAP: Batch Subset (Graph builder + Batch processing)

- Load graph



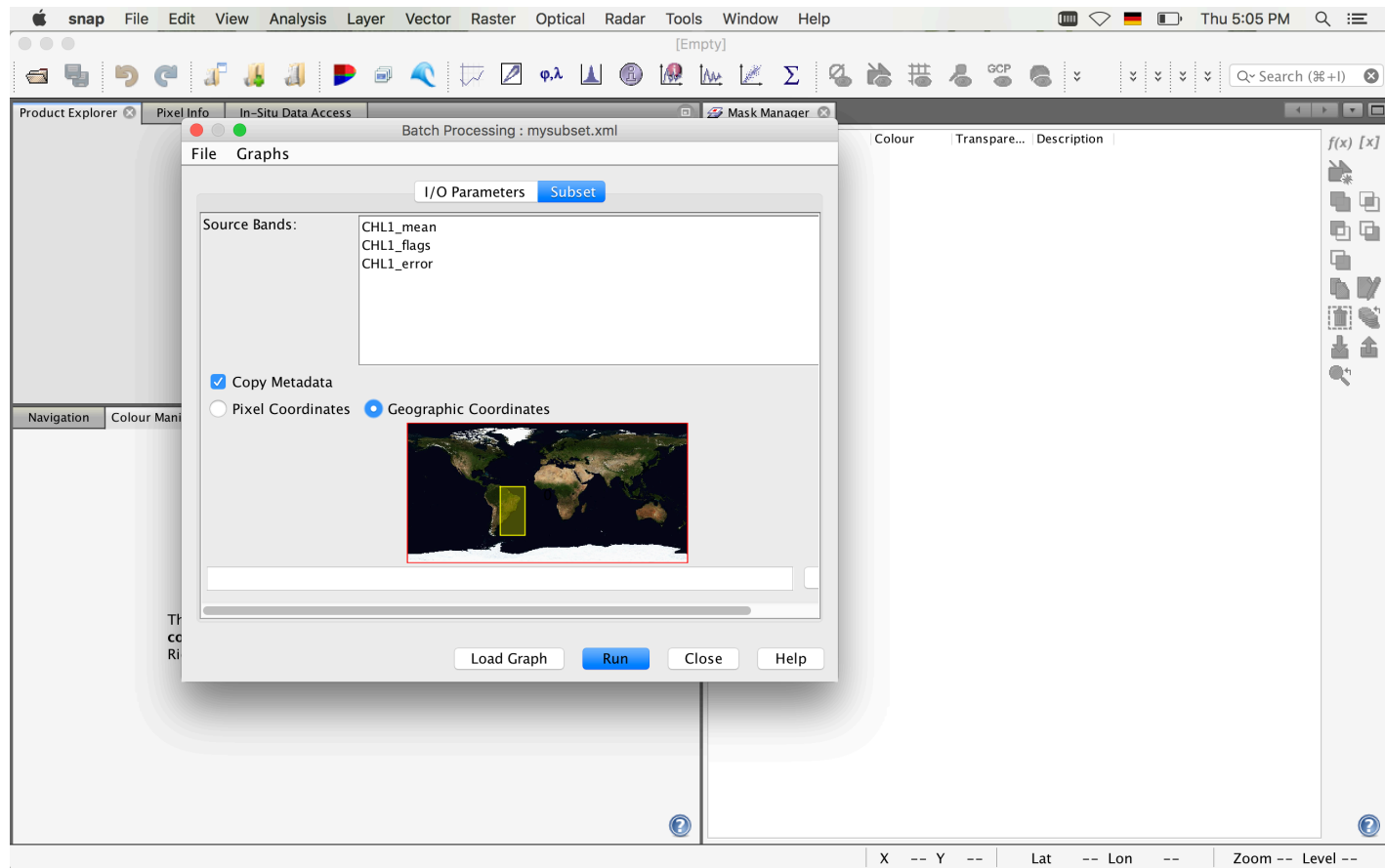
SNAP: Batch Subset (Graph builder + Batch processing)

- Open “Subset”



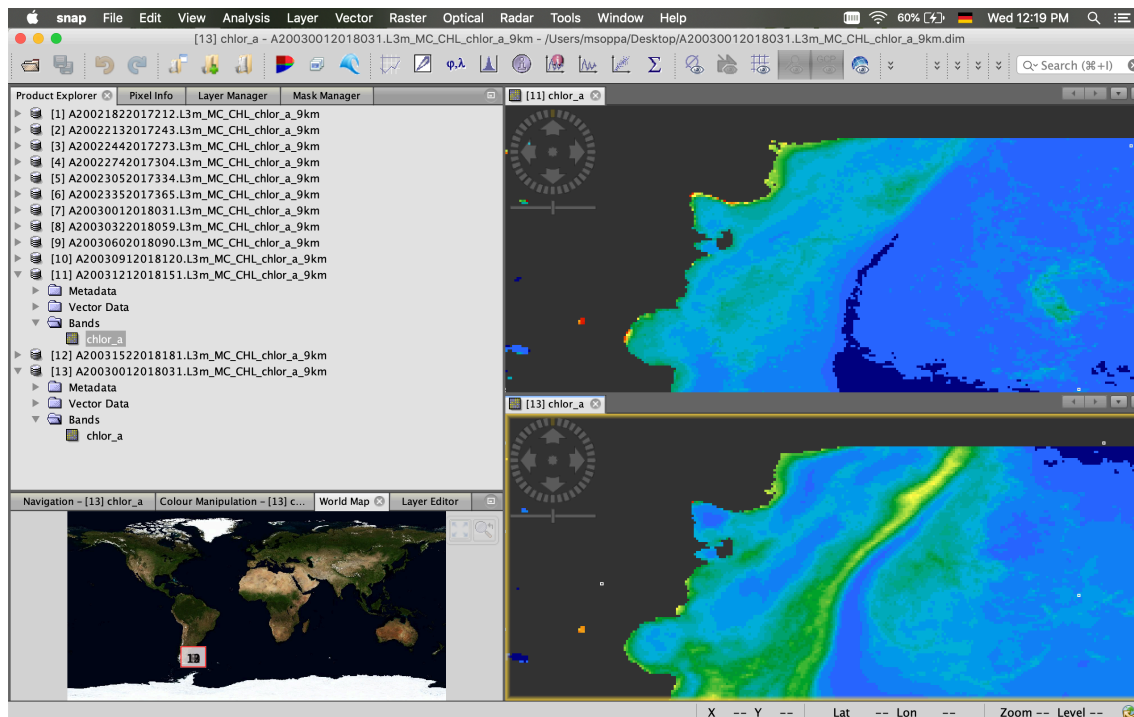
SNAP: Batch Subset (Graph builder + Batch processing)

- Select the region of interest by either using the pixel coordinates or geographical coordinates and RUN!
- The new files will automatically open in SNAP



SNAP: Batch Subset (Graph builder + Batch processing)

- Subset MODIS-Aqua Chlorophyll-a climatology data for your study region using batch processing.
- Open two images, one in summer and one in winter. Apply color and observe the differences.



End of Unit 3