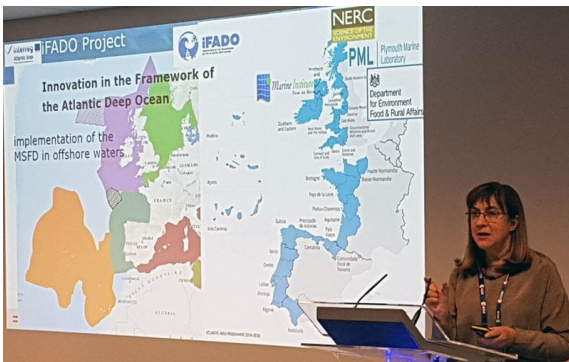


# PORTWIMS

Your quarterly bite of Project News – March 2019



## Message from the Project Coordinator

Welcome to the 2nd project e-newsletter, your quarterly slice of bite-size project news. The last 3 months have been very productive for the project with the planning of two summer schools; a training placement at AWI and the delivery of outreach activities. I hope you enjoy reading more about these events below. We welcome your news stories and images, please submit them to [portwims@pml.ac.uk](mailto:portwims@pml.ac.uk)

28 June - 8 July 2019  
Coastal Summer School 2019  
1st PORTWIMS Summer School

\*Marine phytoplankton diversity observations: innovative methods and industrial applications\*

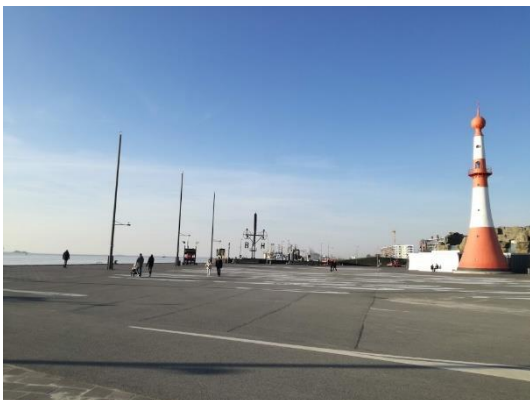
Apply here:  
<https://form.jotformeu.com/90372489517365>  
Travel grants are available

## 1st PORTWIMS Summer School

Copernicus Marine Data Stream for Ocean Applications, Lisbon

A EUMETSAT/PORTWIMS workshop will be held in Lisbon, in June 2019 that will focus on the use of the latest satellite data to support a wide range of marine applications. The course will cover the basic principles of remote sensing, data access, and introduce open source software and transferable skills in programming & data analysis (read more).

Application deadline: 31st March 19



## 2nd PORTWIMS Summer School

Marine phytoplankton diversity observations: innovative methods and industrial applications, Bremerhaven / Helgoland. Twenty students, ten of which will receive support from PORTWIMS, will attend the summer school which will provide training on techniques relevant to long-term in-situ and remote sensing observations of phytoplankton diversity and abundance detection as well as industrial applications of phytoplankton research (read more).

Application deadline: 30 April 19



## Hands-on Training for Student

Lisbon University (FCUL) student Mara Gomes visited AWI in Germany earlier this year for an intense week of hands-on training ahead of the German RV Polarstern in June. Mara will be joining the cruise, from the Falkland Islands to Germany, to study the ecology and distribution of phytoplankton communities living in different biogeochemical provinces of the Atlantic Ocean (read more).



## PORTWIMS Outreach Events

Vanda has been busy presenting information about the project to scientific audiences (Atlantic4Space); the general public (CCOceanos 2019 conference); and to young students at a local school. Vanda used her children's book "The girl who could see the sea with different colours" to explain to the 10-12 year olds what phytoplankton is, why its important and how we can use satellites to observe ocean colour (read more).



## Please report your Outreach Activities

All project staff are asked to report PORTWIMS related outreach activities by completing a quick online survey form. It is important that these activities are captured for project reporting to demonstrate how we are achieving our goal to raise Ocean Literacy. If you have any questions please email the PML communication team by emailing [portwims@pml.ac.uk](mailto:portwims@pml.ac.uk)



*Copyright © 2018. Plymouth Marine Laboratory on behalf of PORTWIMS. All rights reserved.*

This project has received funding from the European Union's Horizon 2020 research and innovation programme under grant agreement No 810139.

Our mailing address is:

PORTWIMS Project Office

Plymouth Marine Laboratory

Prospect Place, Plymouth, Devon, PL1 3DH

[portwims@pml.ac.uk](mailto:portwims@pml.ac.uk)

[www.portwims.org/Home](http://www.portwims.org/Home)